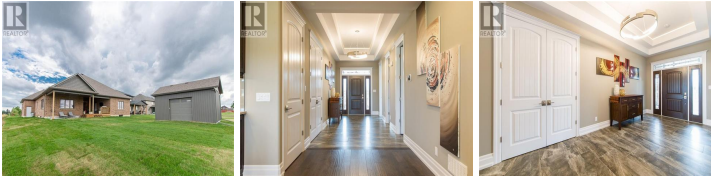


104477

Property No: 30731225



2162 Lindner Court
Shakespeare, ON, N0B 2P0

3 Bedrooms
2 Bathrooms
2,502 Square Feet

\$899,900



Royal LePage Locations
North Brokerage

(800) 886-4713

Thinking about buying this home in Shakespeare -- lets calculate some mortgage payment options and see if purchasing this home can become a reality.

| | | | |
|--------------------|--------------|--------------|--------------|
| Down Payment | 5% | 10% | 20% |
| | \$44,995 | \$89,990 | \$179,980 |
| Mortgage Insurance | \$30,777 | \$19,438 | \$0 |
| | \$885,682 | \$829,348 | \$719,920 |
| Mortgage Rate | 3.44 | 3.44 | 3.44 |
| Mortgage Type | 3 Year Fixed | 3 Year Fixed | 3 Year Fixed |
| Monthly | \$4,241 | \$4,018 | \$3,572 |
| Bi-weekly | \$2,121 | \$2,009 | \$1,786 |
| Weekly | \$1,060 | \$1,005 | \$893 |

A mortgage pre-qualification can be useful as an estimate of how much you can afford to spend on a home.

Find out more about getting pre-approved today!

Shakespeare
Home for Sale

2162 Lindner Court, Shakespeare, Ontario, N0B 2P0

Call or visit to schedule your viewing
MoveMe.To/id/104477



Listing provided by RE/MAX TWIN CITY REALTY INC.. To schedule a viewing call (800) 886-4713 and ask about Listing ID 104477.