

17139

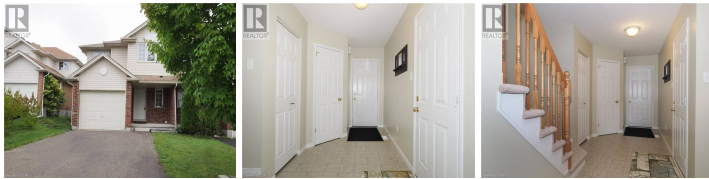
Property No: 40021926



7 SANDCREEK Lane  
Guelph, ON, N1E 7K7

3 Bedrooms  
2 Bathrooms  
15,730,000 Square Feet

**\$608,999**



Royal LePage Locations  
North Brokerage

(800) 886-4713

## Home for Sale

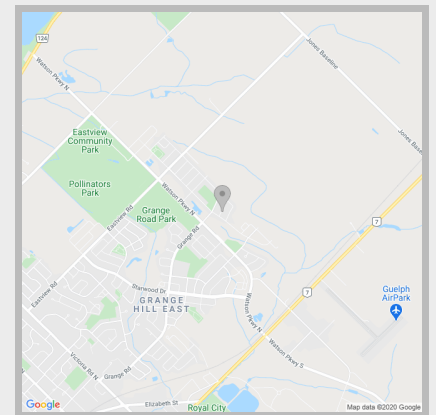
MOVE IN READY !!! East End of Guelph. Neutrally decorated, well maintained 3 bedroom home, large master features walk in closet, 2nd bedroom currently used as an office and 3rd bedroom has a double closet. The main bath is a great size and has two sinks. Bright, eat in kitchen with sliders out to deck. Door from garage in to front hall, main floor 2 pc powder. Spacious main floor, dining room currently being used as a family room. Unfinished basement with good sized windows, cold room, laundry area, room for lots of storage and more. Backyard has a tool shed for more storage. Close to Severn Drive Park and the Watson Creek Trails !MOVE IN READY !!! East End of Guelph. Neutrally decorated, well maintained 3 bedroom home, large master features walk in closet, 2nd bedroom currently used as an office and 3rd bedroom has a double closet. The main bath is a great size and has two sinks. Bright, eat in kitchen with sliders out to deck. Door from garage in to front hall, main floor 2 pc powder. Spacious main floor, dining room currently being used as a family room. Unfinished basement with good sized windows, cold room, laundry area, room for lots of storage and...

Estimated Mortgage Rate

**\$2,096 / month**

based on 20% down at 2.14

Guelph  
Home for Sale



7 SANDCREEK Lane, Guelph, Ontario,  
N1E 7K7

Call or visit to schedule your viewing  
[MoveMe.To/id/17139](http://MoveMe.To/id/17139)



Listing provided by PLANET REALTY INC. To schedule a viewing call (800) 886-4713 to speak with a real estate agent today.